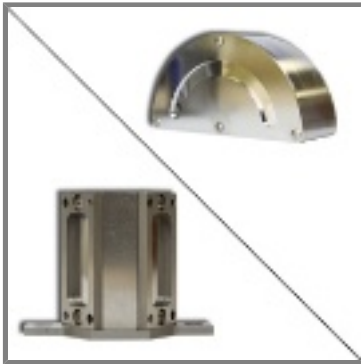




better analysis counts



DCC Optics

Series:

DCC OPTICS

USD Price:

Contact XOS

Improved Performance with Doubly Curved Crystal Optics

Highly monochromatic X-ray beams focused in three dimensions can be obtained by using Doubly Curved Crystals (DCC). Crystals of mica, graphite, silicon, germanium, and others are used for an energy range of 1.5 to 58.KeV. Crystal optics reflect X-rays based on Bragg diffraction.

Features

- 3-Dimensional point-to-point focusing of X-ray
- Highly monochromatic beam
- Large capture angle

Benefits

- High flux density gain
- Large working distance
- Extremely low background
- High detection sensitivity

Applications

- Monochromatic XRF
- Single crystal XRD
- Powder XRD
- Small feature analysis
- X-ray reflectometry (Metrology)

- X-ray imaging offers good P/B ratio to improve contrast for medical application
- WDS (Wavelength Dispersive Spectrometry)